

1/4 LINE

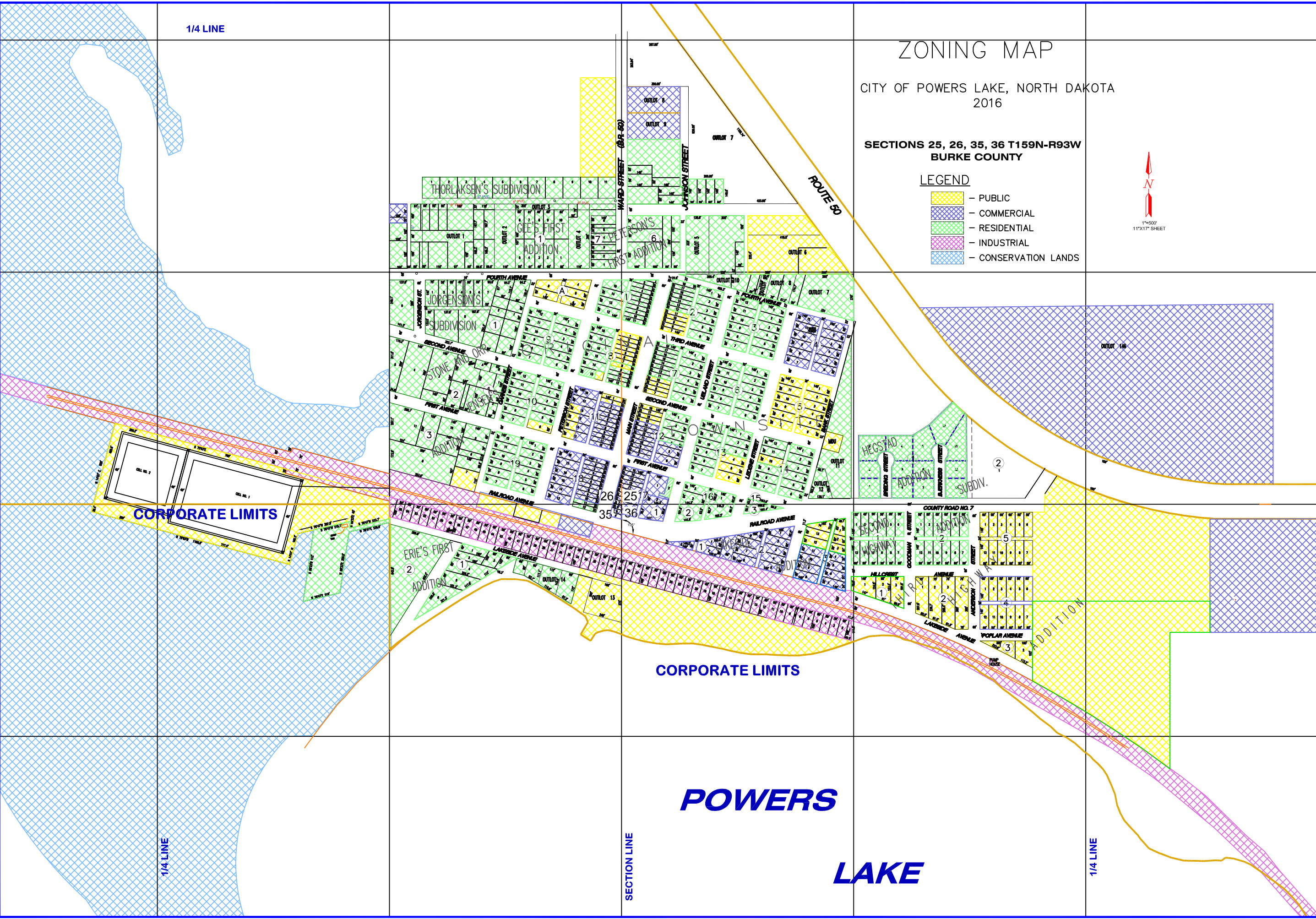
# ZONING MAP

CITY OF POWERS LAKE, NORTH DAKOTA  
2016

SECTIONS 25, 26, 35, 36 T159N-R93W  
BURKE COUNTY

### LEGEND

- PUBLIC
- COMMERCIAL
- RESIDENTIAL
- INDUSTRIAL
- CONSERVATION LANDS



No.	Revisions	By	Date	Appr.

**ACKERMAN ESTVOLD**

1907 17th Street Southeast · Minot, ND 58701  
701.837.8737 · www.ackerman-estvold.com

SCALE (H): 1" = 500'  
SCALE (V): 1" = NA  
DRAWN BY: SRW  
DESIGNED BY: AE  
CHECKED BY: AE  
DATE: 1/10/2016

**ZONING MAP**

**CITY OF POWERS LAKE, ND**

PROJECT NO. R00027  
DRAWING NAME ZONING MAP  
**C-3A**

Wednesday, December 11, 2013 10:27:47 AM  
C:\Users\SRW\Desktop\PowerLake\CityOfPowersLake\ZoningMap\ZoningMap 2016.dwg